

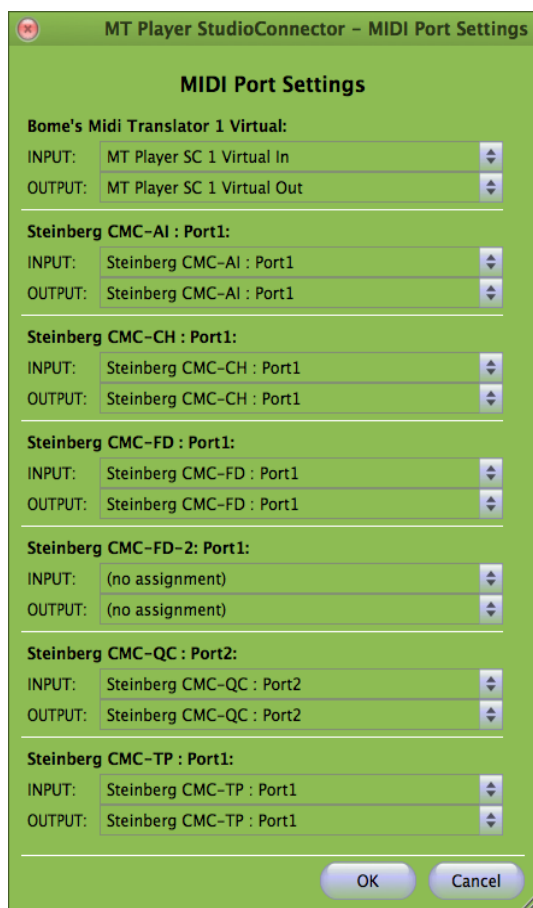
# StudioConnector Setup

- Make sure that the Steinberg CMC drivers are installed on your system and that the CMC units have the latest firmware.
- Open the StudioConnector folder and double click **MTPlayer1.8.0.27\_SC.dmg** (Mac) or **MTPlayer1.8.0.27\_SC.exe** (Windows)
- Follow the instructions of the MT Player installer to install MT Player
- **Start MT Player – StudioConnector.**
- Click on the “(no preset)” box and browse for the StudioConnector script file or drag the StudioConnector script file on the MT Player window:



“StudioConnector 1.0 **DIM ON**.btme” works with dimmed led lights on  
 “StudioConnector 1.0 **DIM OFF**.btme” works with dimmed led lights off

- The MIDI Port Settings window pops-up (if this doesn't, **right click on the MT Player window and click on “MIDI settings”**). Here you have to choose the right ports for communication from/to Pro Tools and from/to each CMC unit. The very first time, only the ports which could not be found will show up (the other ports are connected automatically).



**Demo Version:** Select “**MT Player Demo 1 Virtual In/Out**” for receiving/sending MIDI data from/to **Pro Tools**

**Full Version:** Select “**MT Player SC 1 Virtual In/Out**” for receiving/sending MIDI data from/to **Pro Tools**

Select “Steinberg CMC-AI : Port 1” for receiving/sending MIDI data from/to the **AI unit**

Select “Steinberg CMC-CH : Port 1” for receiving/sending MIDI data from/to the **CH unit**

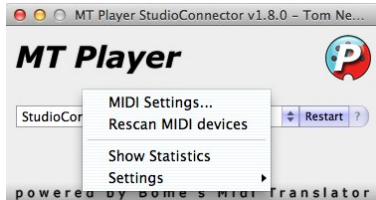
Select “Steinberg CMC-FD : Port 1” for receiving/sending MIDI data from/to the **FD unit**. This unit is assigned to faders 1-4 in the HUI bank.

A **second FD unit** can be assigned for faders 5-8 in the HUI bank. Select “Steinberg CMC-FD : Port 1” from your **second FD unit**

Select “Steinberg CMC-QC : Port 2” for receiving/sending MIDI data from/to the **QC unit**. (Port 1 and Port 3 don't work)

Select “Steinberg CMC-TP : Port 1” for receiving/sending MIDI data from/to the **TP unit**

- For CMC units you don't have, select “(none – don't ask again)”
- Click “OK” to exit the MIDI port settings window. The settings are stored automatically.
- If you want to adjust the MIDI port settings at a later moment, right click on MT Player window and click on MIDI Settings...



- **Now start Pro Tools**

- Go to the **Setup** menu and choose **MIDI > Input Devices...**

**Demo version:** Enable MIDI port “From MT Player Demo 1”

**Full version:** Enable MIDI port “MT Player SC 1”

Keep all CMC MIDI ports disabled except “Steinberg CMC-QC, port1”. This one can be used for instrument control (Pro Tools MIDI learn) when the CMC-QC is in MIDI mode.

- Click “OK” to exit the MIDI Input Devices window

- Go to the **Setup** menu and choose **Peripherals...**

- Click on the “MIDI Controllers” tab. Here you have to add a HUI device. In slot #1 click on the Type box “none” and select **HUI** from the pop up menu. If you have a reason to use **slot #2, 3 or 4** please read “Configurations with other controllers”.

- In the corresponding “Receive From” and “Send To” boxes select the ports for receiving/sending MIDI data from/to MT Player. The **demo** version uses another port then the **full** version:

**Demo Version:** for Receive From, select ”From MT Player Demo 1”  
For Send To, select “To MT Player Demo 1”

**Full Version:** for Receive From, select ”MT Player SC 1”  
for Send To, select ”MT Player SC 1” as well

In slot #1 select **HUI** for Type

Slot # 2, 3 and 4 don't support Plug-in control. Check “Configurations with other controllers”

	Type	Receive From	Send To	# Ch's
#1	HUI	MT Player SC 1	MT Player SC 1	8
#2	none	none	none	
#3	none	none	none	
#4	none	none	none	

- Click “OK” to exit the MIDI controllers window

- For some CMC units you have **check these settings** in Pro Tools for optimal use:
- CMC-CH
  - Activate the numeric keypad “Transport” option in the Preferences/Operation menu
  - Activate the “Scroll to tracks” Banks controllers function in the Preferences/Mixing menu
  - Activate “Link track and edit selection” in the Options menu
  - Activate the “a-z” button in the upper right corner in the edit window.
- CMC-TP
  - Activate the numeric keypad “Transport” option in the Preferences/Operation menu
- CMC-QC
  - Activate the numeric keypad “Transport” option in the Preferences/Operation menu
  - Activate the “Scroll to tracks” Banks controllers function is in the Preferences/Mixing menu
  - Activate “Link track and edit selection” in the Options menu.
- **Setup is finished!**

- **Configurations with other controllers:**

There are some guidelines you have to think of when you want to combine StudioConnector with other control surfaces at the same time.

**General warning:**

If you want to use StudioConnector in combination with other MIDI controllers or control surfaces, please test this by yourself before you purchase StudioConnector.

Download the StudioConnector demo and remove all other MIDI controllers and control surfaces in the Pro Tools Peripherals setup. Then install StudioConnector and test the functionality of the CMC units in combination with Pro Tools.

Then, reconnect the other controllers and check if the behaviour of StudioConnector changes in a way that is inconvenient for you.

- **Multiple HUI devices**

When you have another MIDI controller connected to Pro Tools via HUI protocol and this device is selected in **slot #1** in the MIDI controllers window, you can assign StudioConnector as HUI device in **slot #2**, but then all controls are mapped to the second 8 tracks. Also in this configuration, Plug-in control with StudioConnector is not possible.

When you swap the devices: StudioConnector in slot #1 and the other controller in slot #2, StudioConnector will control the first 8 tracks and the other MIDI controller the second 8 tracks. In this configuration, StudioConnector is able to control Plug-ins and the other MIDI controller is not.

- **Ethernet control surface + HUI device**

When you have a control surface connected via ethernet, then StudioConnector is mapped to the same tracks as the ethernet control surface. Plug-in control via StudioConnector works.